



Sounds

fff very loud and PPP very soft so it has variety.



Sequences

Picilo <sup>up</sup> then down, <sup>then tuba goes down then up</sup> so its exciting and wakes up the audience ✓ great!



Textures

really exciting and scary so its fun to listen to.



Timbres

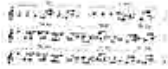
Tuba, picilo because they are different.



Dynamic Shapes

Picilo:

tuba:



Melodic/Harmonic Ideas

Picilo on melody, tuba on harmony because picilo is higher and is good on melody and tuba is really low and good for harmony.

**Tempo:** My tempo is pretty fast, because I definitely don't want it to drag and become boring. I want the customer to be excited about the phone and encourage them to buy it. Also it represents the phone because it is a fast phone. ✓

**Rhythm:** The rhythm is jumpy, and exciting because this phone is a brand new thing and is really big. It will make people want to buy it if it is exciting and fast so people will want to buy it fast.

**Dynamics:** This is forte because I want it to pop out. At the end I want it to fade out into piano. Also it will be more exciting if it is louder. ✓

**Timbre:** I picked violin because it

<p>What works well? (pitch, rhythm, harmony, dynamics, timbre, texture, form, and/or style/ articulation)</p>	<p>rhythm is good and the harmony.</p>
<p>What could improve the composition?</p>	<p>There is no dynamics</p>

What did you learn from the peer and teacher feedback that will help you make to the composition more effective?  
*This section to be complete by the composer*

I learned to put in dynamics.

# Smart Phone Jingle

The musical score for "Smart Phone Jingle" is written in G major (one sharp) and 2/4 time. It consists of four staves of music. The first staff begins with a tempo marking of quarter note = 1 and a dynamic of *mf*. A first ending bracket spans the first two measures of the first staff, with a dynamic of *f* starting at the second measure. The second staff starts at measure 10 and includes a dynamic of *mf* and a *f*. The third staff starts at measure 20 and includes a dynamic of *ff*. The fourth staff starts at measure 26 and includes accents (>) over the first and third measures. The piece concludes with a double bar line.

SmartPhone Jingle Responding Form

articulation) are used to promote the new SmartPhone, and portray its characteristics:

She choose a faster tempo because the phones connection is faster & syncupated rhythm because the phone has lots of new updates.

Not to fast because didn't want it to be to speedy but didn't want it to drag.

Evaluate the composition citing specific examples of how the composition is or isn't appropriate in style, mood, and/or performance quality for the advertisement of the SmartPhone.

It is very up beat and has a good syncupated rhythm.

The fimbre was used very nicely and went along with the words well.