



Sounds

ring tone, percussion (timpani, snare, bass), viola, violin, flute + cello



Sequences

A, B, C, B, A

A = ring tone + percussion

B = viola + violin

C = flute + cello



Textures

A = dense B = sparse C = dense A = dense

medium - not many instruments but loud + smooth

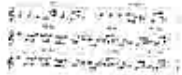
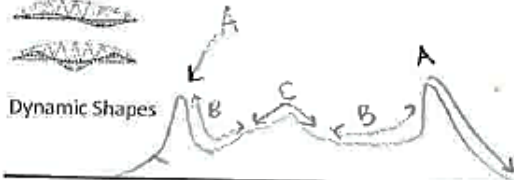


Timbres

percussion = loud viola/violin = medium flute cello = dense



Dynamic Shapes



Melodic/Harmonic Ideas



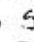
fast like a pop song but with musical instruments

Identify and describe the various ways you might use the musical elements to portray the characteristics of the new SmartPhone in your jingle:

Tempo:

I made it slow at the beginning and faster towards the middle to show how it cannot be broken and all of the ups and downs, when it might fall.
that happens

Rhythm:

I made the first part   have longer notes ~~and~~ ^{first} then they get faster like  sixteenth notes because the smart phone is really flexible and works fast like the fast notes.

Dynamics:

At the beginning it is really loud and it gets quieter trying to mimic how the smart phone can start up really easily and how it is flexible.

Timbre:

I used the cello and viola to make it sound flexible and smooth because they have strings, the clarinet is supposed to sound strong and fast like how it is indistructable.

Teacher Feedback:

This section to be complete by the listener

<p>What works well? (pitch, rhythm, harmony, dynamics, timbre, texture, form, and/or style/articulation)</p>	<p>Really good job at making the instruments blend together. The ending was good but the really strong part was the middle. Also Ruby did a good job choosing when to put the forte's and pinnos.</p>
<p>What could improve the composition?</p>	<p>When the choro was by itself it felt like it needed something to help the peice be more "phone like."</p>

Clo

Vla

Cl

8

12

Clo

Vla

Cl

f

mf

12

15

Clo

Vla

Cl

mf

15

D. (pitch, rhythm, harmony, dynamics, timbre, texture, form, and/or style/articulation) are used to promote the new SmartPhone, and portray its characteristics:

the fast beat shows how the fast and newer technology. Violins are faster and higher. figure to show how it is easy to use the new phone.

2 sections - 2 in first 1 in last.

fast to show new technology. She used shorter stronger notes to show how it's indestructible. No dynamics because it's in own. Oboe to show weirdness of the phone. long notes to show how it is flexible.

Evaluate the composition citing specific examples of how the composition is or isn't appropriate in style, mood, and/or performance quality for the advertisement of the SmartPhone.

I think that it should have more percussion or sharper instruments to make it sound more like new technology. I loved the fastness and articulation.

The viola in the background sounded a little funny. I think there should've been a stronger ending and less percussion. I think it is really good for a jingle because it has strong notes.